

MONTHLY MEMBERSHIP PROGRESS REPORT

LOCATION INDIA

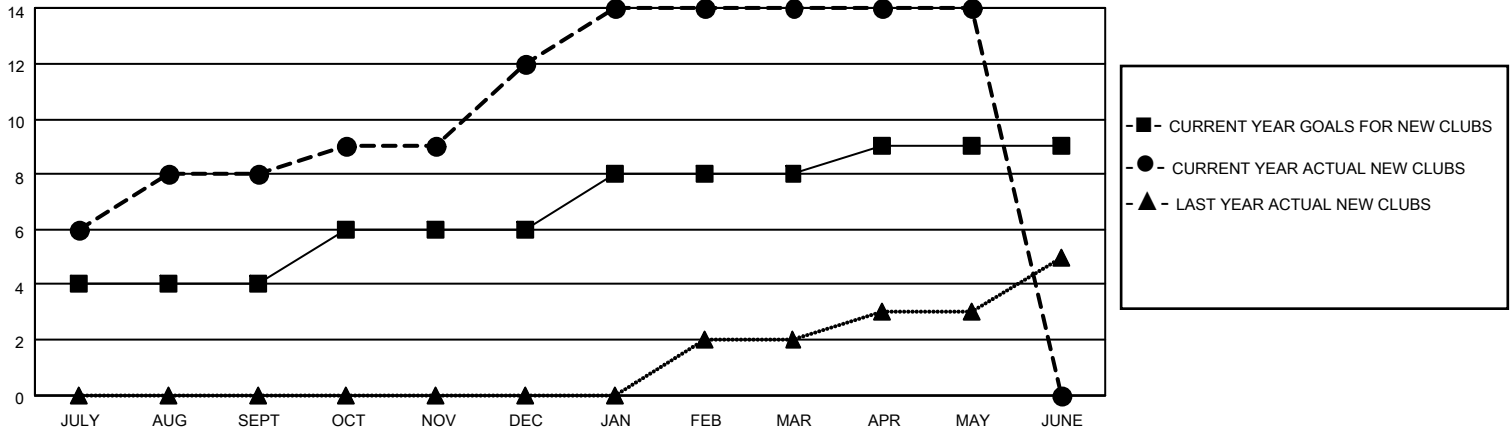
District 324B1

Results as of: 5/31/2021

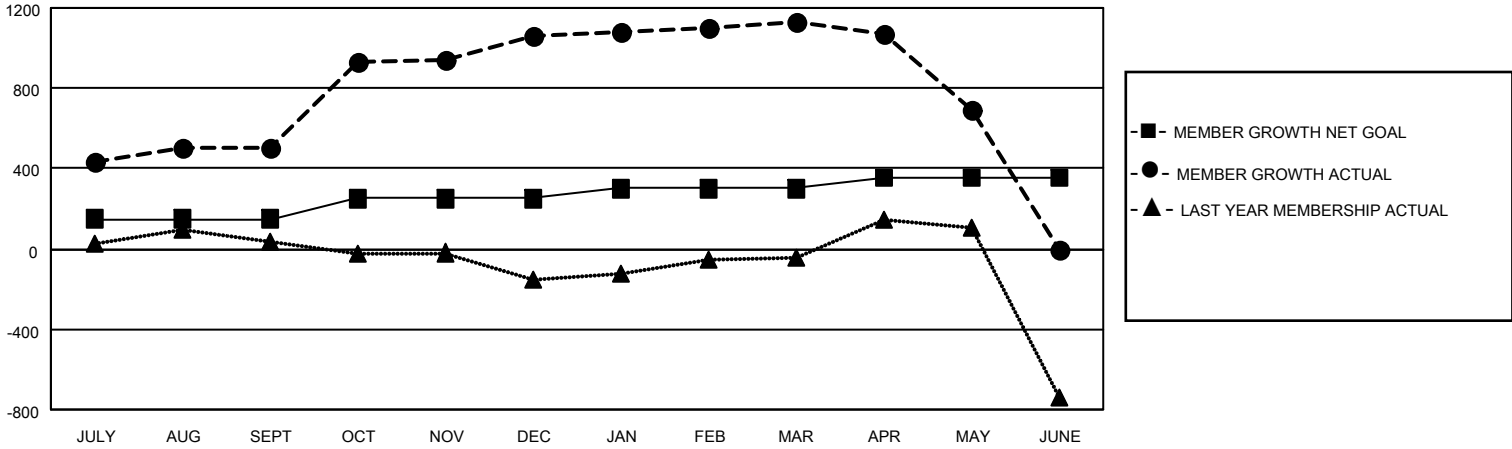
Clubs			
RESULTS FOR 2020-2021			
QUARTER	NEW CLUB GOAL	NEW CLUBS	DROPPED CLUBS
JULY/AUG/SEPT	4	8	0
OCT/NOV/DEC	2	4	0
JAN/FEB/MAR	2	2	0
APR/MAY/JUNE	1	0	0

Members			
RESULTS FOR 2020-2021			
QUARTER	MEMBER GROWTH NET GOAL	MEMBER GROWTH ACTUAL	DROPPED MEMBERS ACTUAL (including transfers)
JULY/AUG/SEPT	150	736	86
OCT/NOV/DEC	100	848	57
JAN/FEB/MAR	50	268	47
APR/MAY/JUNE	50	179	612

GOALS AND ACTUAL NEW CLUBS CUMULATIVE



GOALS AND ACTUAL MEMBERS CUMULATIVE



DROPPED CLUBS: 0	98 CLUBS OF 115 ADDED 1 OR MORE NEW MEMBERS	<u>GENDER DISTRIBUTION</u>
<u>DROPPED MEMBERS</u>	CLICK HERE FOR CUMULATIVE MEMBERSHIP DATA	MALE 5,123 (66.38%)
DECEASED 15		FEMALE 2,595 (33.62%)
CLUB CANCELLED 0		TOTAL FAMILY UNIT MEMBERS 4,470
OTHER 787		FAMILY MEMBERS PAYING HALF DUES 2,713
TOTAL 802		